

RACEPAK SPORTSMAN

610-KT-SPRTMN

WHAT'S IN THE BOX

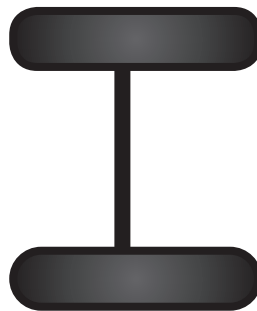
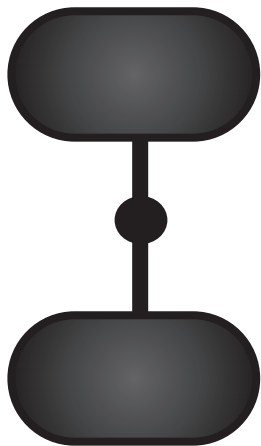
- (A) SPORTSMAN Data Logger
- (B) Power/TACH/REC Harness
- (C) DS RPM/12 Volt Event Harness
- (D) SD Memory Card - *inserted in logger*
- (E) V-Net Terminator End Cap - *attached to logger*
- (F) Driveshaft Sensor Bracket
- (G) Driveshaft Sensor
- (H) 4 x Rubber Mounting Feet
- (I) Start Record Button
- (J) Assorted connectors
- (K) Programming Cable
- (L) USB to Serial Cable Adapter
- (M) SD Mobile Card Reader
- (N) USB Memory Stick



QUICKSTART GUIDE

1

MOUNTING THE DATA LOGGER



Mount flat - not on side



Min. 18" away from
coil and ignition box

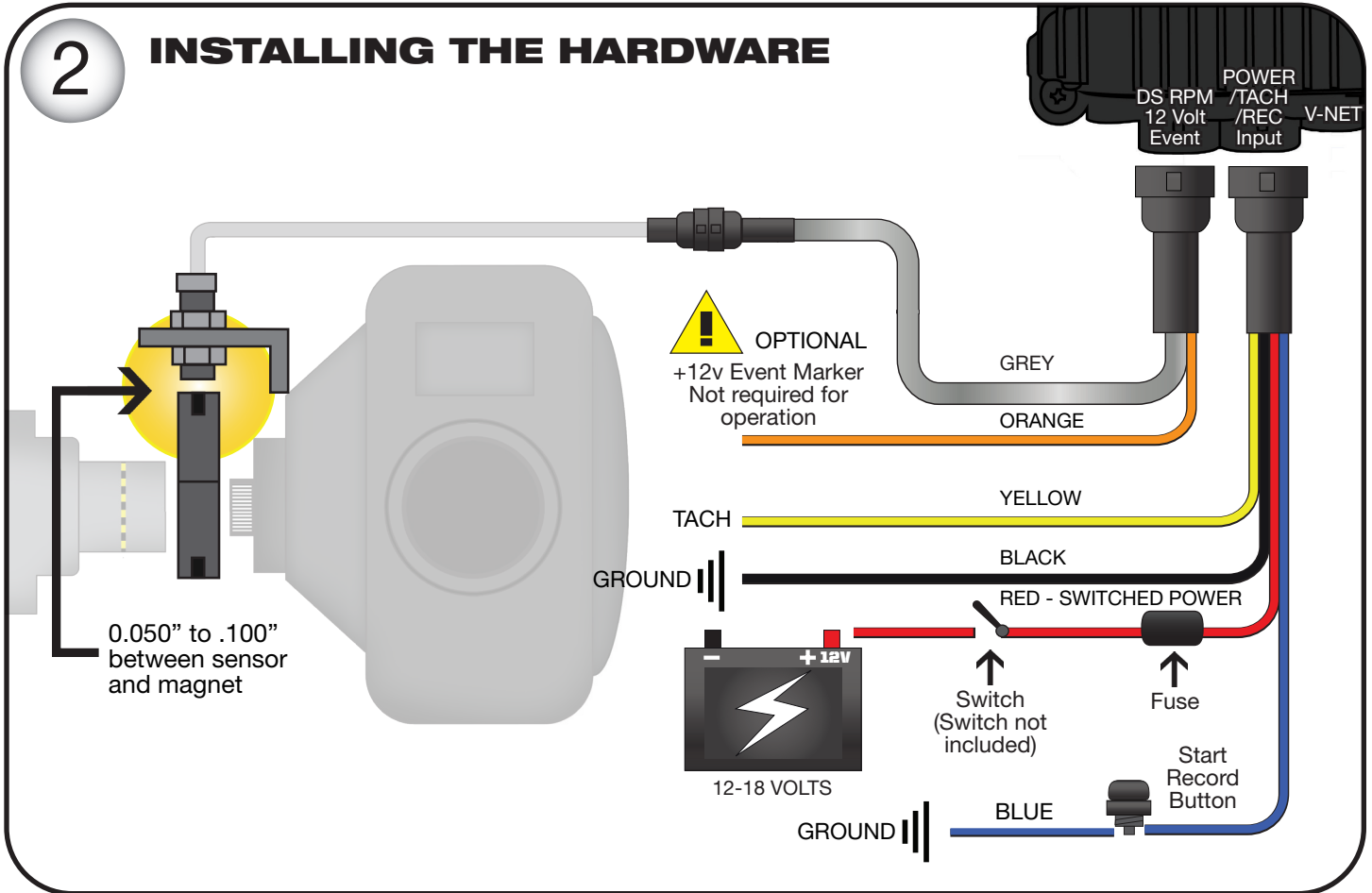


18"
or more



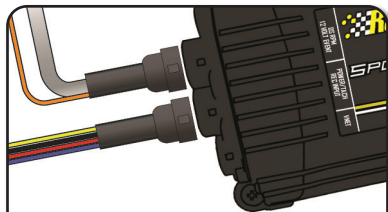
2

INSTALLING THE HARDWARE

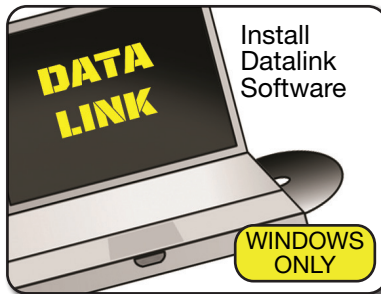


3

CHECK YOUR WORK



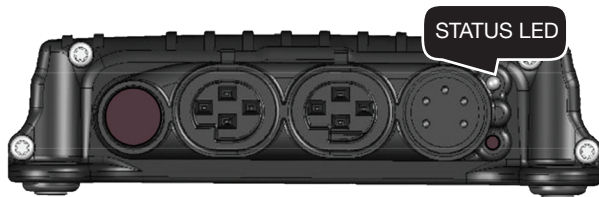
Check to ensure all cables and connectors are connected.







Power Sportsman ON.



CHECK THE LIGHT



-  SOLID RED : Power is on and ready to go.
-  RED GREEN : Flashing 3 red 1 green, data is recording and writing to memory card.
-  SOLID GREEN : Firmware update in progress.
-  SOLID YEL-LOW : SD memory card not recognized.



If you wish to set time and date, refer to back page.



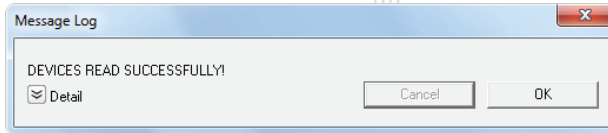
DO NOT REMOVE OR INSERT SD CARD WITH POWER ON.

4

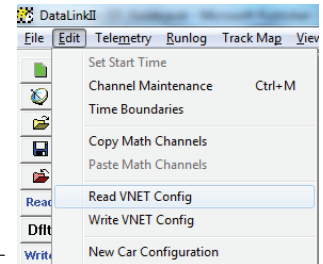
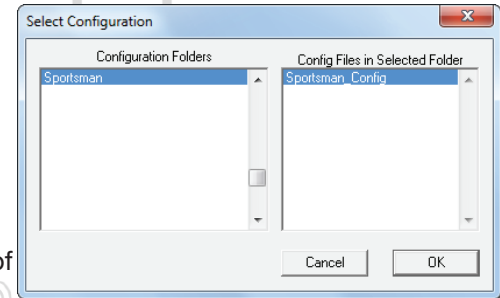
ADDING OPTIONAL VNET SENSORS

When installing new sensors or items on the V-Net system, you must update/sync the configuration file in your PC to insure that any changes and/or updates performed on your Racepak system will properly take affect. Carefully follow the instructions below to perform the configuration update.

- Start the DataLink software.
- Connect the programming cable between the Racepak data logger in the car and your PC.
- Apply power to the RacePak data logger.
- If the Sportsman_Config is not already loaded, select File from the menu bar then select Open Car Configuration. Select the Sportsman_Config and click on the OK button.
- Select Edit from the menu bar then select Read VNET Config. You may also use the 'READ' button in the toolbar which appears on the left side of your screen.
- The message log will appear and your configuration will begin to update. Click on the OK button when you see the message "Devices Read Successfully".

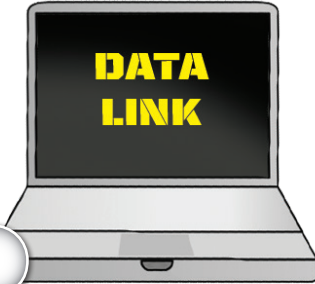


- If you receive an error at the beginning of this step, verify you are set on the COM port that matches the port the cable is installed on.
- Select File from the menu bar and select Save. This ensures that the changes performed are saved into the configuration file on your PC.
- Programming is now complete. Turn off the power to the Racepak data logger and disconnect the serial cable.



5

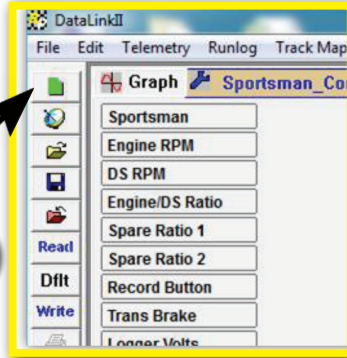
DOWNLOADING A RUN FILE



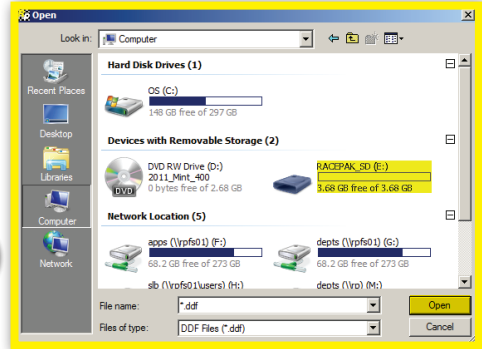
1



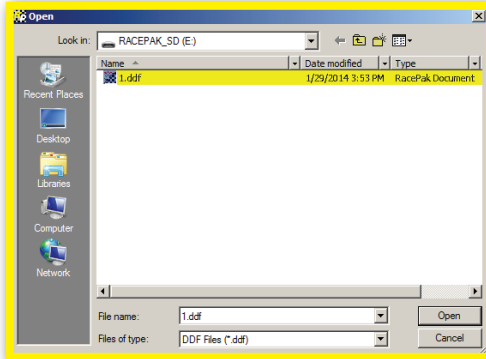
2



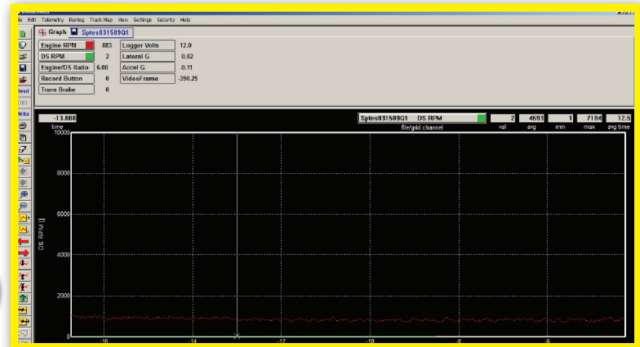
3



4

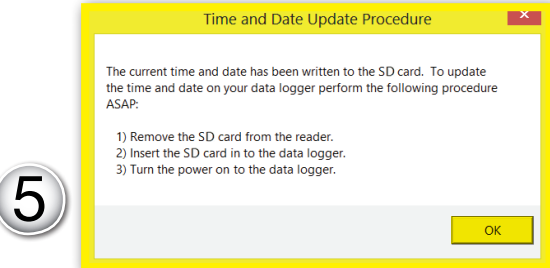
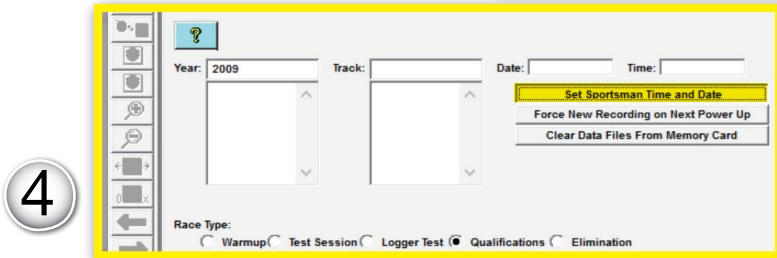
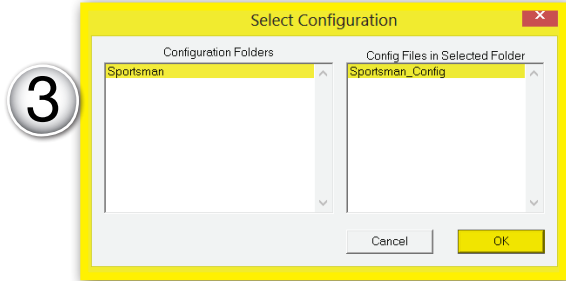
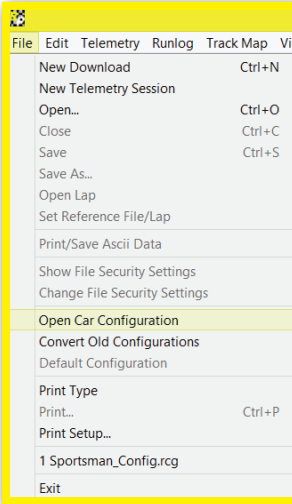
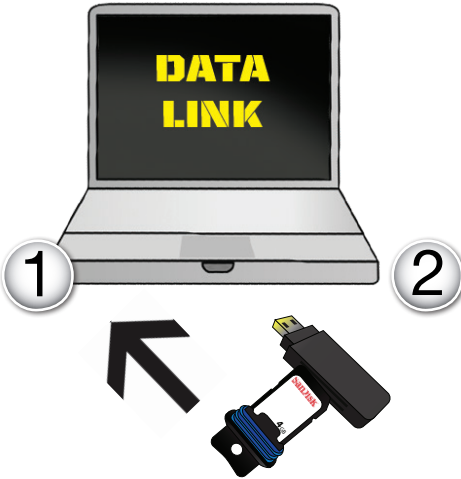


5



6

SETTING THE DATE AND TIME IN THE LOGGER



The current time and date has been written to the SD card. To update the time and date on your data logger perform the following procedure ASAP:

- 1) Remove the SD card from the reader.
- 2) Insert the SD card in to the data logger.
- 3) Turn the power on to the data logger.

OK



2445 Nashville Road, Suite B1, Bowling Green, KY 42101

www.holley.com / 1-866-464-6553

Revised 05/25

MANL-FRM 32442