

INSTRUCTIONS

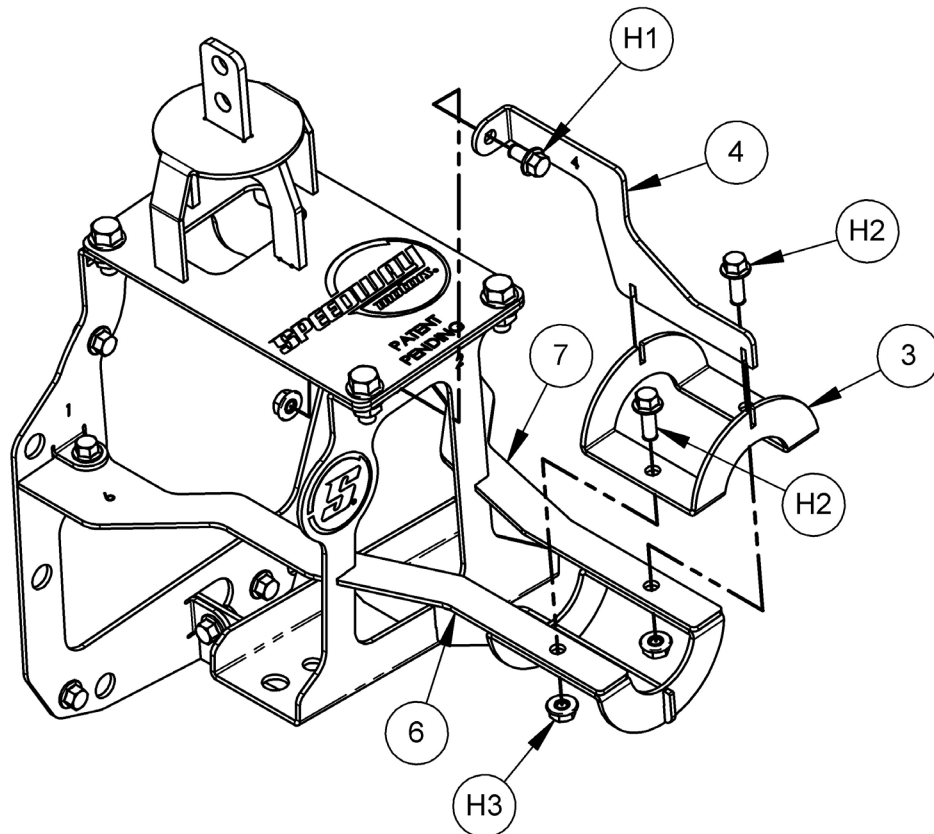
© 2024, Speedway Motors, Inc.



910-89671.2 - SoloSwap™ Magnum Tail Housing Mockup

Kit Contents			
Qty	Part #	Description	Item #
1	91089671.2.1	Mount, Magnum Tail Housing	1
1	91089671.2.2	Mid Plate, Magnum Tail Housing	2
1	91089671.2.3	Half Ring, Magnum Tail Housing	3
1	91089671.2.4	Top Plate, Magnum Tail Housing	4
1	91089671.2.5	Bottom Plate, Magnum Tail Housing	5
1	91089671.2.6	Left Plate, Magnum Tail Housing	6
1	91089671.2.7	Right Plate, Magnum Tail Housing	7
1	91089671.2.8	Shifter, Magnum Tail Housing	8

Hardware			
Qty	Description	Tool Size	Item #
8	Serrated Flange Hex Head, Zinc Plated, 1/4-20 x .50	3/8 Hex	H1
2	Serrated Flange Hex Head, Zinc Plated, 1/4-20 x .75	3/8 Hex	H2
10	Serrated Flange Nut, Zinc Plated, 1/4-20	7/16 Hex	H3
4	Serrated Flange Hex Head, Zinc Plated, 5/16-18 x .75	1/2 Hex	H4
4	Serrated Flange Nut, Zinc Plated, 5/16-18	1/2 Hex	H5



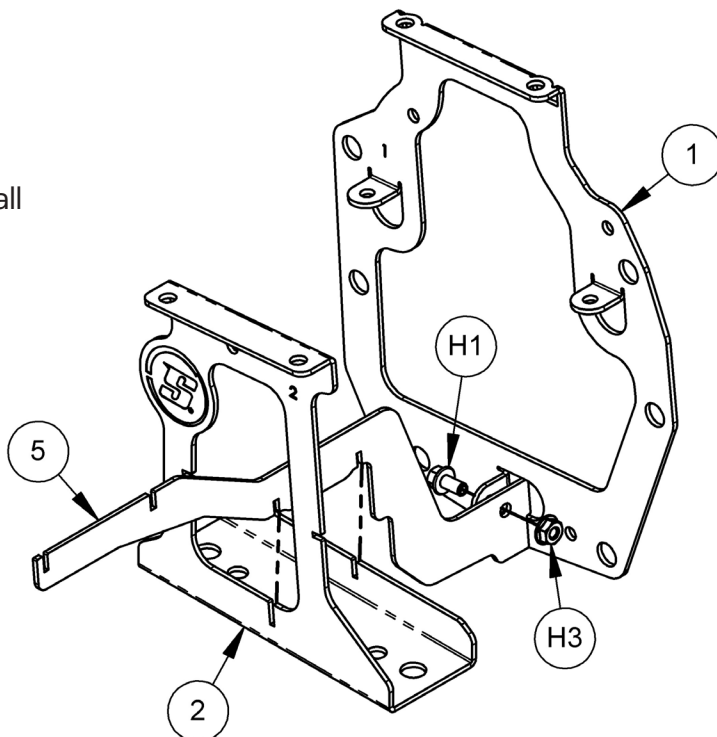
INSTRUCTIONS

© 2024, Speedway Motors, Inc.

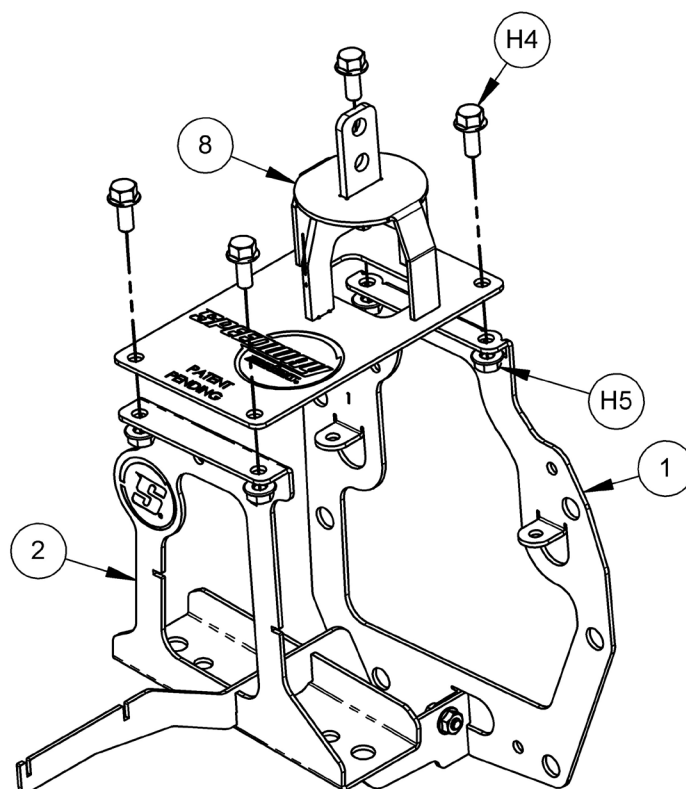
SPEEDWAY
motors®

1. Count and ensure that all listed parts in the instructions sheet are supplied.

2. Fasten the bottom plate (5) to the mount plate (1) using 1/4-20 x 1/2" bolt and nut. Leave the bolts finger tight. Install the mid plate (2) through the opening and push up into the slots.



3. Attach the shiter plate (8) to the mount plate (1) and the mid plate (2) using the 5/16 hardware. Leave the bolts finger tight.

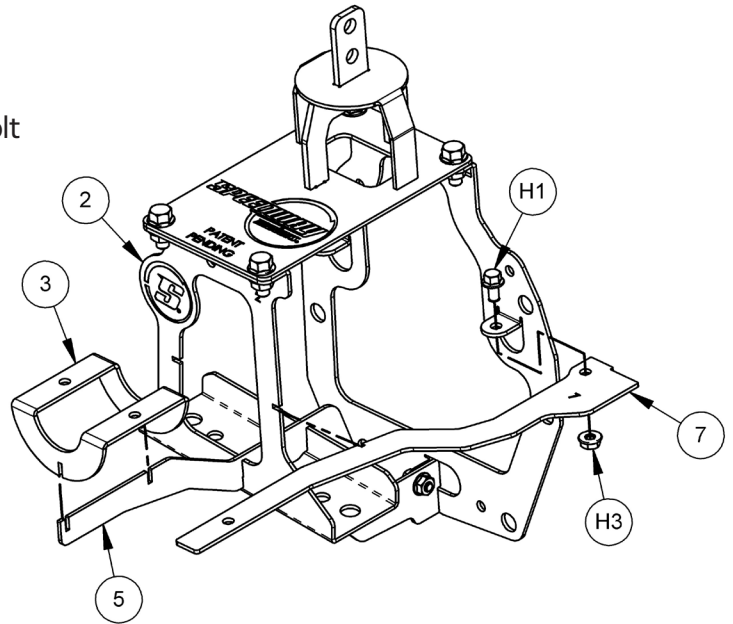


INSTRUCTIONS

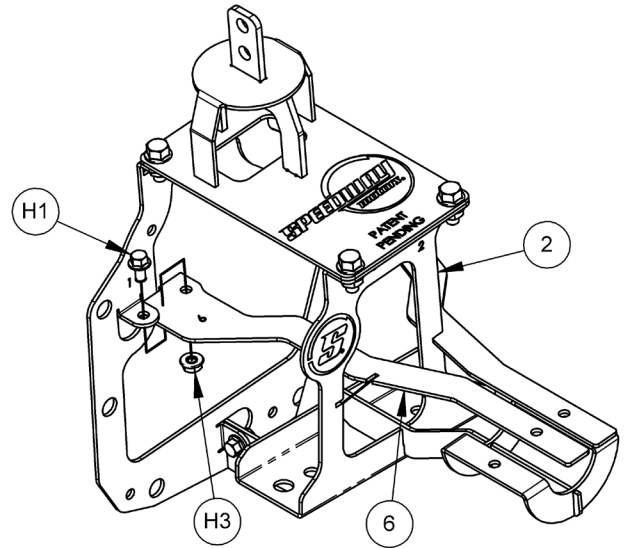
© 2024, Speedway Motors, Inc.

SPEEDWAY
motors®

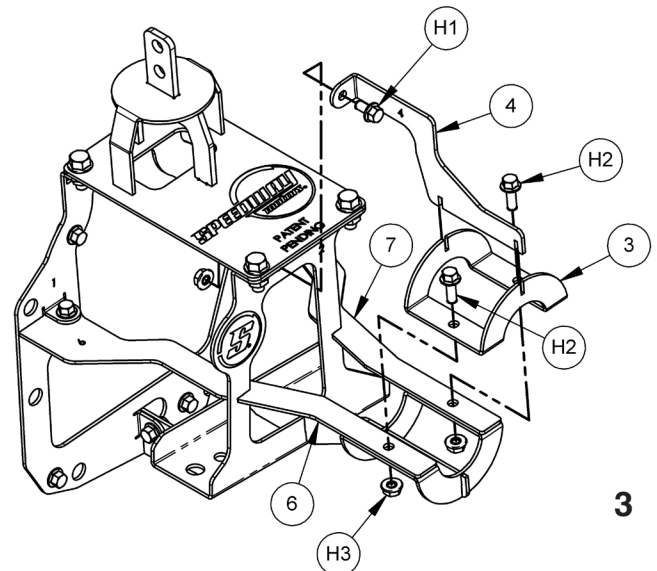
4. Press the half ring (3) down onto the bottom plate (5) slots. Align the slots of the mid plate (2) and the right side plate (7) and press into place. Fasten using 1/4-20 x 1/2" bolt and nut. Leave the bolts finger tight.



5. Insert the left side plate (6) through the mid plate (2). Align the slots of the mid plate (2) and the left side plate (6) and press into place. Fasten using 1/4-20 x 1/2" bolt and nut. Leave the bolts finger tight.



6. Align the slots of the half ring (3) and the top plate (4) and press into place. Fasten using 1/4-20 x 3/4" bolt and nut through the side plates (6,7) and the other half ring (3). Fasten to the mid plate (2) using 1/4-20 x 1/2" bolt and nut.



7. Tighten all bolts.