

INSTRUCTIONS

© 2024, Speedway Motors, Inc.

SPEEDWAY
motors®

910-89671.3 - SoloSwap™ F-Body Tail Housing Mockup

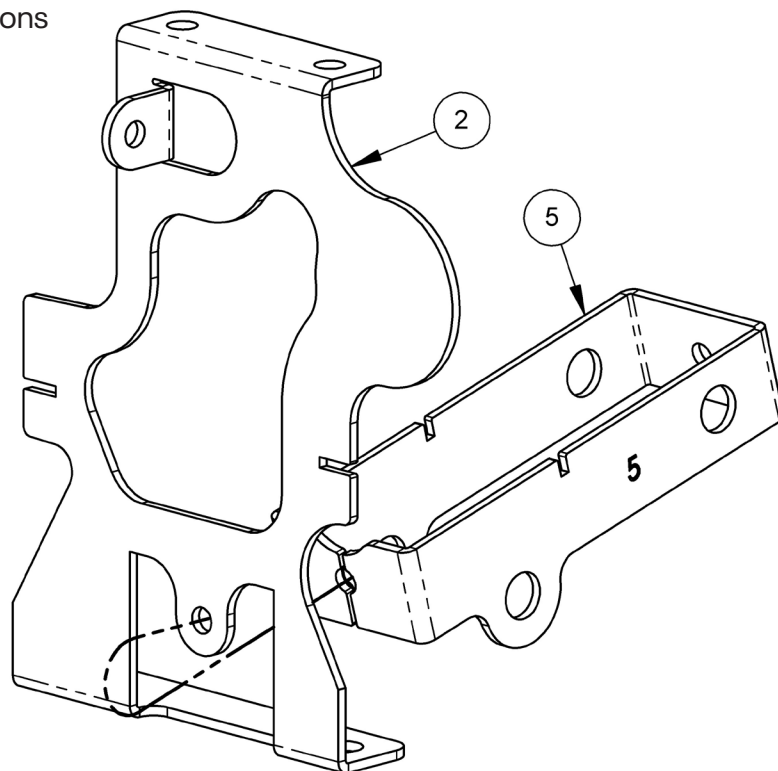
Kit Contents			
Qty	Part #	Description	Item #
1	91089671.3.1	Mount Plate, F-Body Tail Housing	1
1	91089671.3.2	Mid Plate, F-Body Tail Housing	2
1	91089671.3.3	Back Plate, F-Body Tail Housing	3
1	91089671.3.4	Yoke Plate, F-Body Tail Housing	4
1	91089671.3.5	Rear Mount, F-Body Tail Housing	5
1	91089671.3.6	Left Plate, F-Body Tail Housing	6
1	91089671.3.7	Right Plate, F-Body Tail Housing	7
1	91089671.3.8	Bottom Plate, F-Body Tail Housing	8
1	91089671.3.9	Top Plate, F-Body Tail Housing	9
1	91089671.3.10	Shifter, F-Body Tail Housing	10
Hardware			
Qty	Description	Tool Size	Item #
12	Serrated Flange Hex Head, Zinc Plated, 1/4-20 x .50	3/8 Hex	H1
1	Serrated Flange Hex Head, Zinc Plated, 1/4-20 x .75	3/8 Hex	H2
13	Serrated Flange Nut, Zinc Plated, 1/4-20	7/16 Hex	H3
4	Serrated Flange Hex Head, Zinc Plated, 5/16-18 x .75	1/2 Hex	H4
4	Serrated Flange Nut, Zinc Plated, 5/16-18	1/2 Hex	H5

INSTRUCTIONS

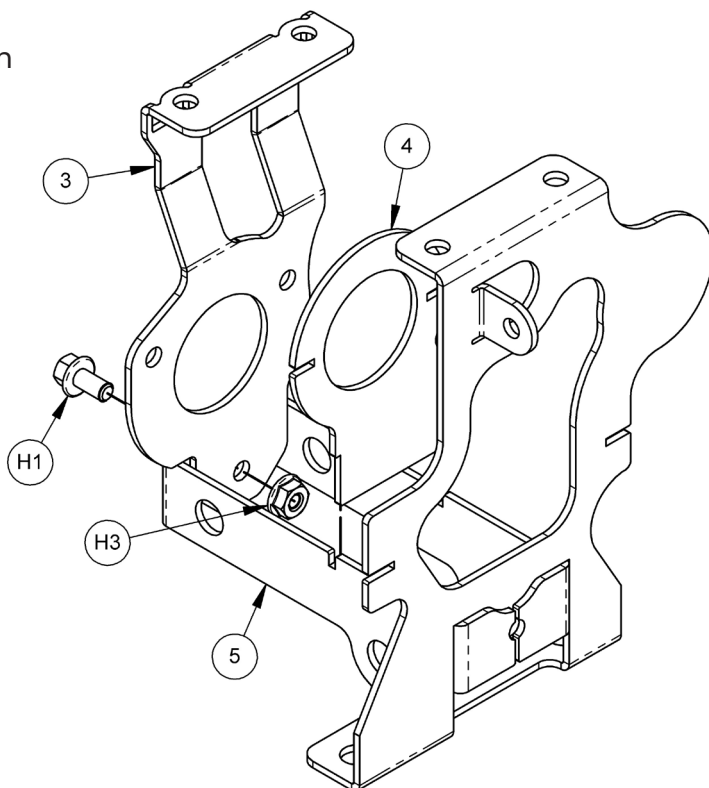
© 2024, Speedway Motors, Inc.

SPEEDWAY
motors®

1. Count and ensure that all listed parts in the instructions sheet are supplied.
2. Place the rear mount (5) through the mid plate (2).



3. Place the back plate (3) to the inside of the rear mount (5). Fasten together using a 1/4-20 x 1/2" bolt and nut. Align yoke plate (4) with the slots of the rear mount (5) and push down into place. Leave the bolts finger tight.

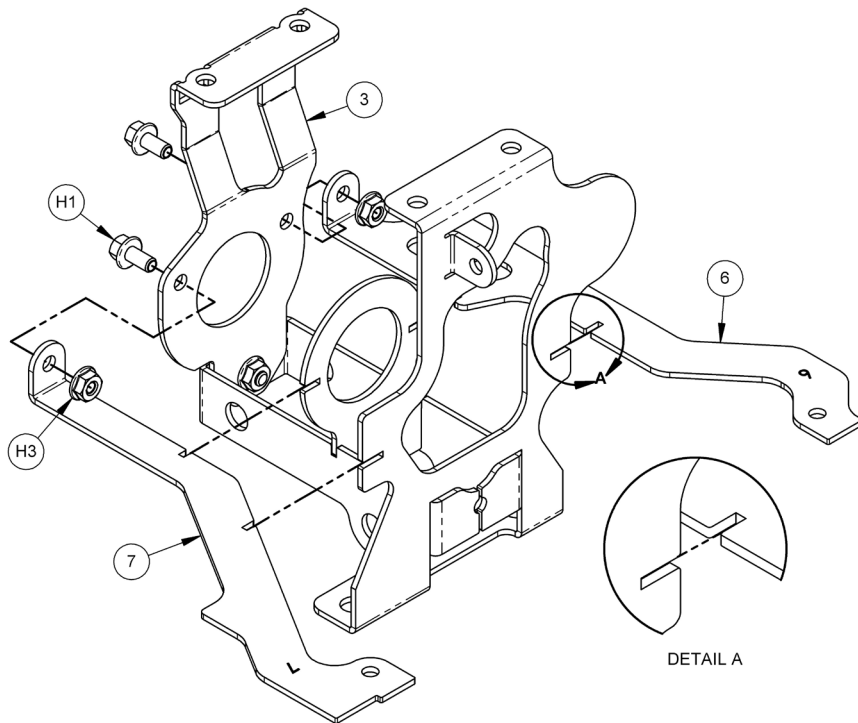


INSTRUCTIONS

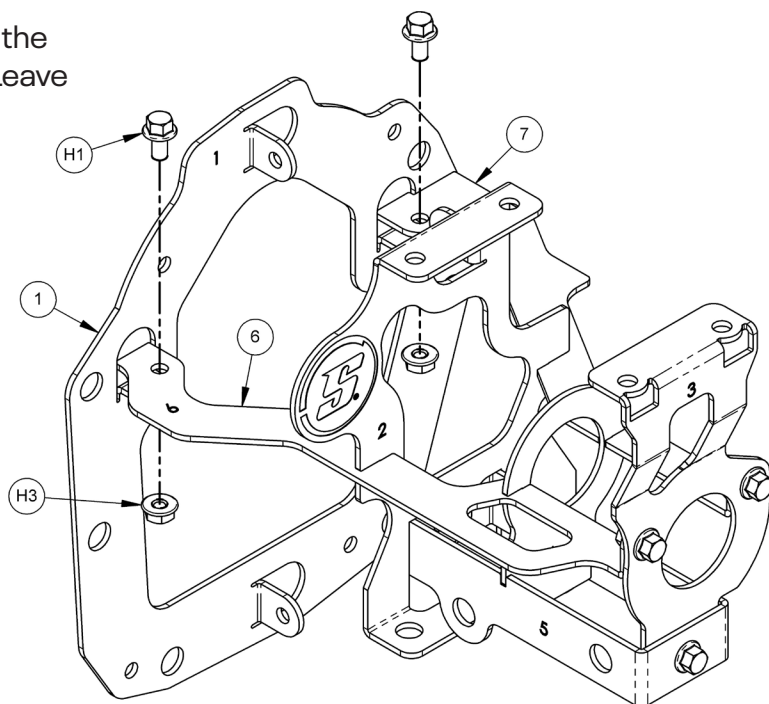
© 2024, Speedway Motors, Inc.

SPEEDWAY
motors®

4. Align the left plate (6) and the right plate (7) as shown below using the guide slots provided. Once all parts are in their relative position they can be pushed securely into their respective slots. Then, use the 1/4-20 x 1/2" bolts and nuts provided in the kit to secure them through the back plate (3). Leave the bolts finger tight.



5. Attach the mount plate (1) to left side plate (6) and the right side plate (7) using 1/4-20 x 1/2" bolts and nuts. Leave the bolts finger tight.

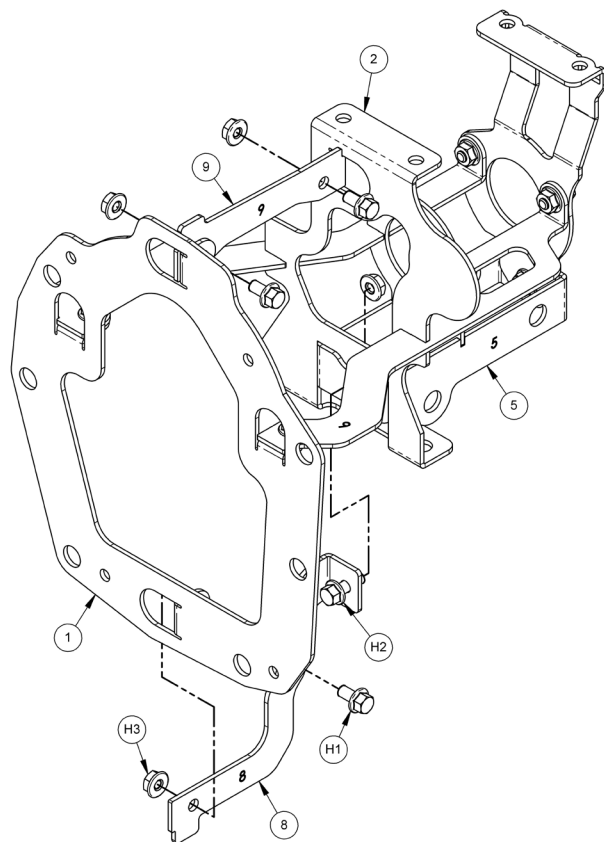


INSTRUCTIONS

© 2024, Speedway Motors, Inc.

SPEEDWAY
motors®

6. Attach the bottom plate (8) to the rear mount (5) using 1/4-20 x 3/4" bolt and nut. Attach the bottom plate (8) to the mount plate (1) using 1/4-20 x 1/2" bolt and nut. Attach the top plate (9) to the mount plate (1) and to the mid plate (2) using 1/4-20 x 1/2" bolts and nuts. Leave the bolts finger tight.



7. Attach the shiter plate (10) to the back plate (3) and the mid plate (2) using the 5/16 hardware. Leave the bolts finger tight.

8. Tighten all bolts.

