

INSTRUCTIONS

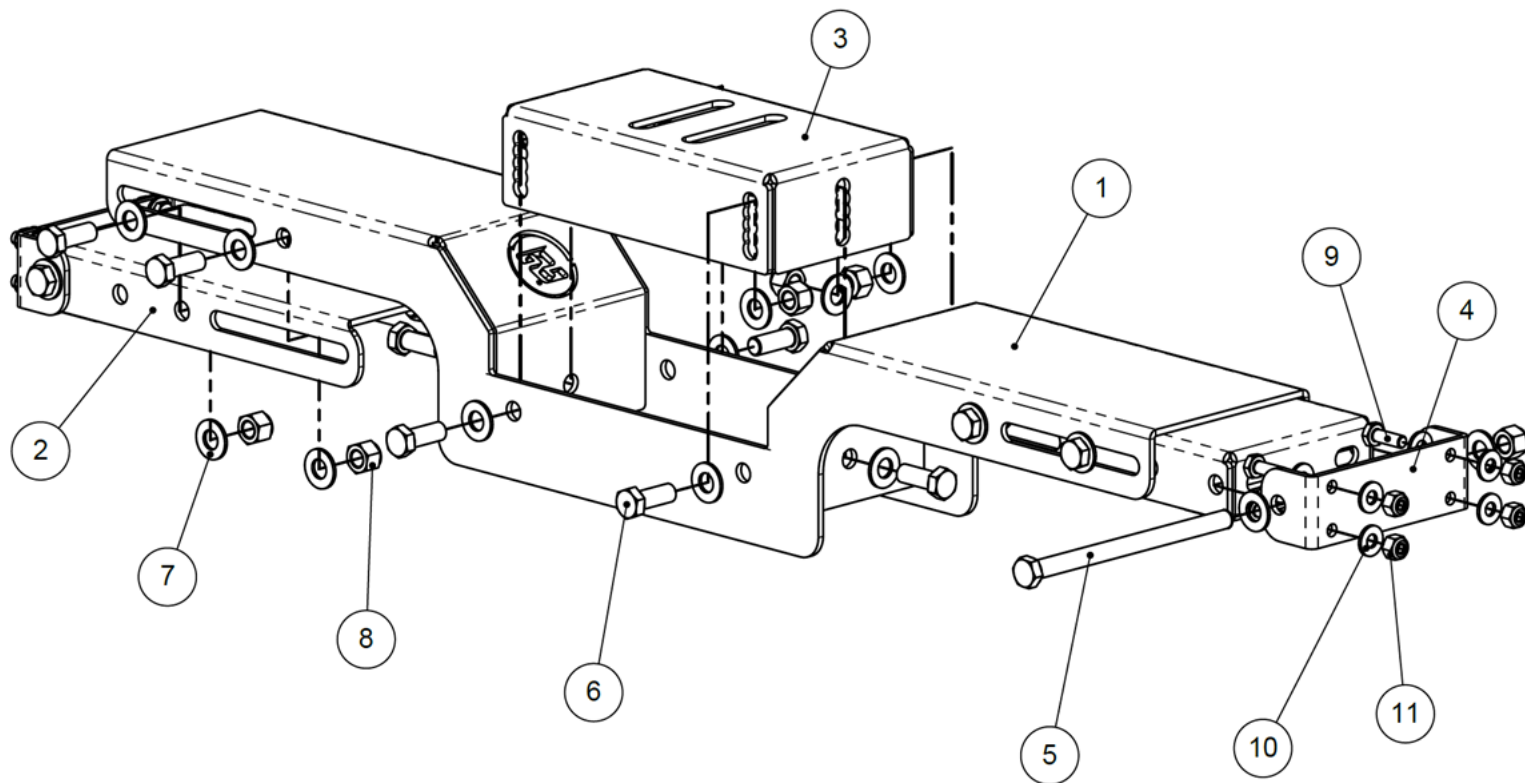
© 2024, Speedway Motors, Inc.

SPEEDWAY
motors®

910-98007 - UNIVERSAL TRANSMISSION CROSSMEMBER

Kit Contents			
Qty	Part #	Description	Item #
2	91098007.C#	Center Support	1
1	91098007.E#	End Slider	2
1	91098007.1	Center Mount	3
1	91098007.2	End Mount	4

Hardware			
Qty	Description	Tool Size	Item #
2	Hex Cap Screw, 3/8-24 x 5.50	9/16 Hex	5
22	Hex Cap Screw, 3/8-24 x 1.00	9/16 Hex	6
48	Flat Washer, 3/8	N/A	7
24	Nylon Lock Nut, 3/8-24	9/16 Hex	8
8	Hex Cap Screw, 1/4-28 x 0.75	7/16 Hex	9
16	Flat Washer, 1/4	N/A	10
8	Nylon Lock Nut, 1/4-28	7/16 Hex	11



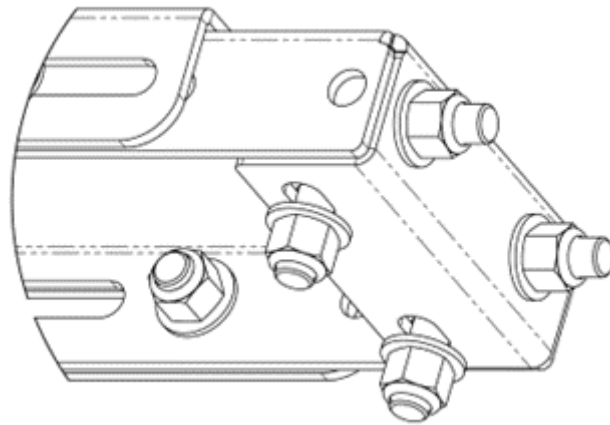
INSTRUCTIONS

© 2024, Speedway Motors, Inc.

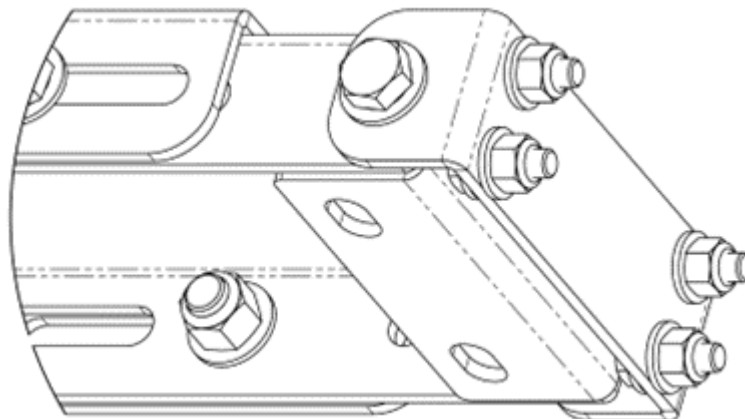


1. First, measure your frame and verify you purchased the correct crossmember for your application. Each universal crossmember is adjustable but has a fixed width range which is shown in the table below. Be sure to check that your width is within the range for your specific mounting configuration because the length varies depending on if you are using the quick disconnect style or direct bolt on style mounting.

	Length w/ 2-Bolt Detach		Length w/o 2-Bolt Detach		X-Member Drop	
	Min	Max	Min	Max	Min	Max
91098007-NAR-2	32.4	37.6	29.5	36.5	1.5	2.5
91098007-NAR-4	33.9	39.1	31	38	3.5	4.5
91098007-WIDE-2	36.6	43.6	35.5	42.5	1.5	2.5
91098007-WIDE-4	38.1	45.1	37	44	3.5	4.5



Direct Bolt-On Style

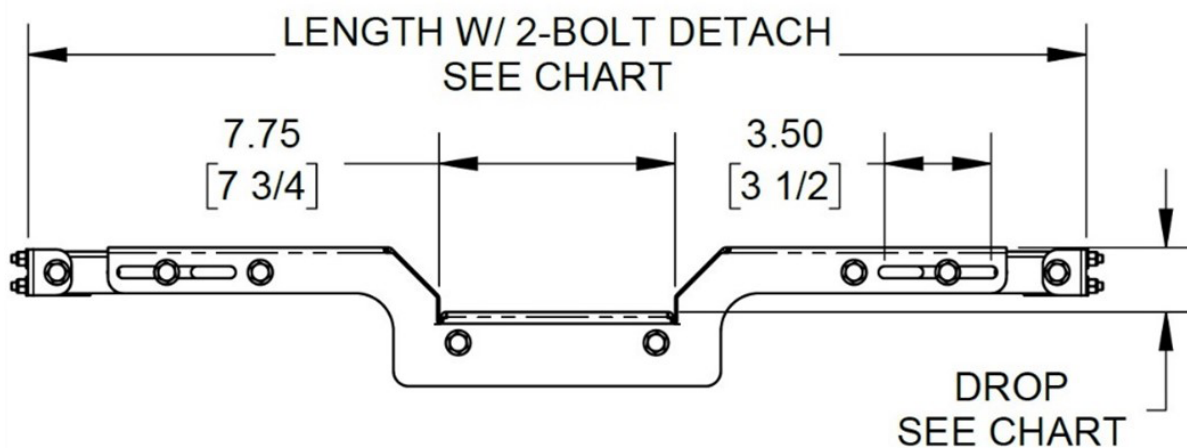
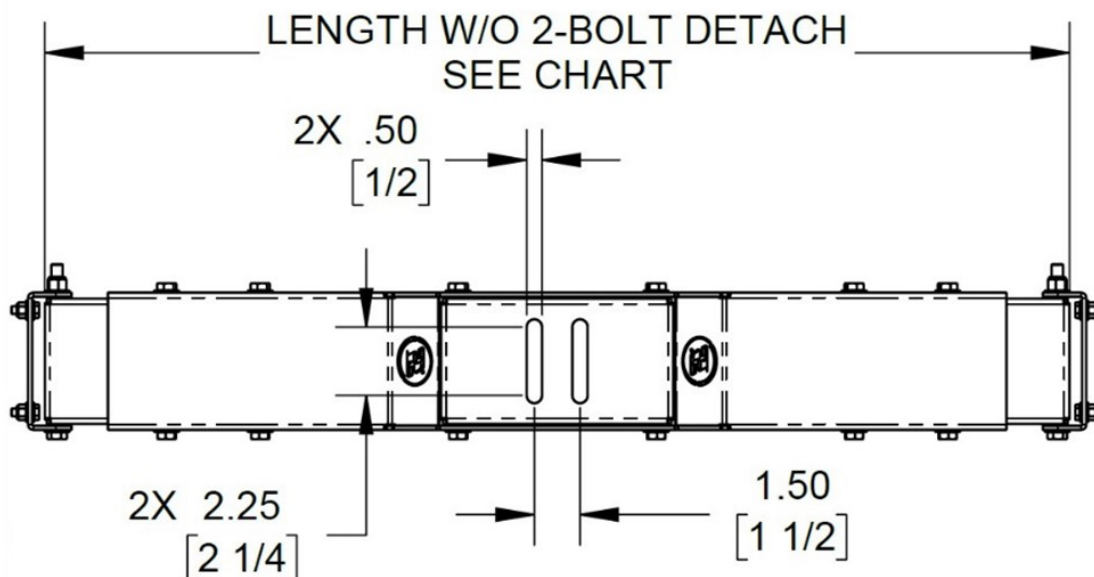


2-Bolt Disconnect Style

INSTRUCTIONS

© 2024, Speedway Motors, Inc.

SPEEDWAY
motors®



- Count and ensure that all listed parts and hardware are supplied.
- Mockup your crossmember with all bolts loose to allow the sliders to move. With your crossmember mocked into position, use the crossmember ends as a stencil to mark your holes for drilling. Be sure your crossmember is properly centered and square to the vehicle before marking your holes. The quick disconnect ends will require 1/4" holes and the direct bolt on style mounting will require 3/8" holes.
- Drill your holes and install your cross member. **NOTE:** It is recommended to drill pilot holes before drilling to the final size and re-mocking the crossmember to ensure that it is properly positioned.
- With your crossmember installed, measure your side to side and verify that the crossmember is centered before tightening all bolts. At this time you can also adjust your vertical center slider as necessary.