

# INSTRUCTIONS

© 2025, Speedway Motors, Inc.

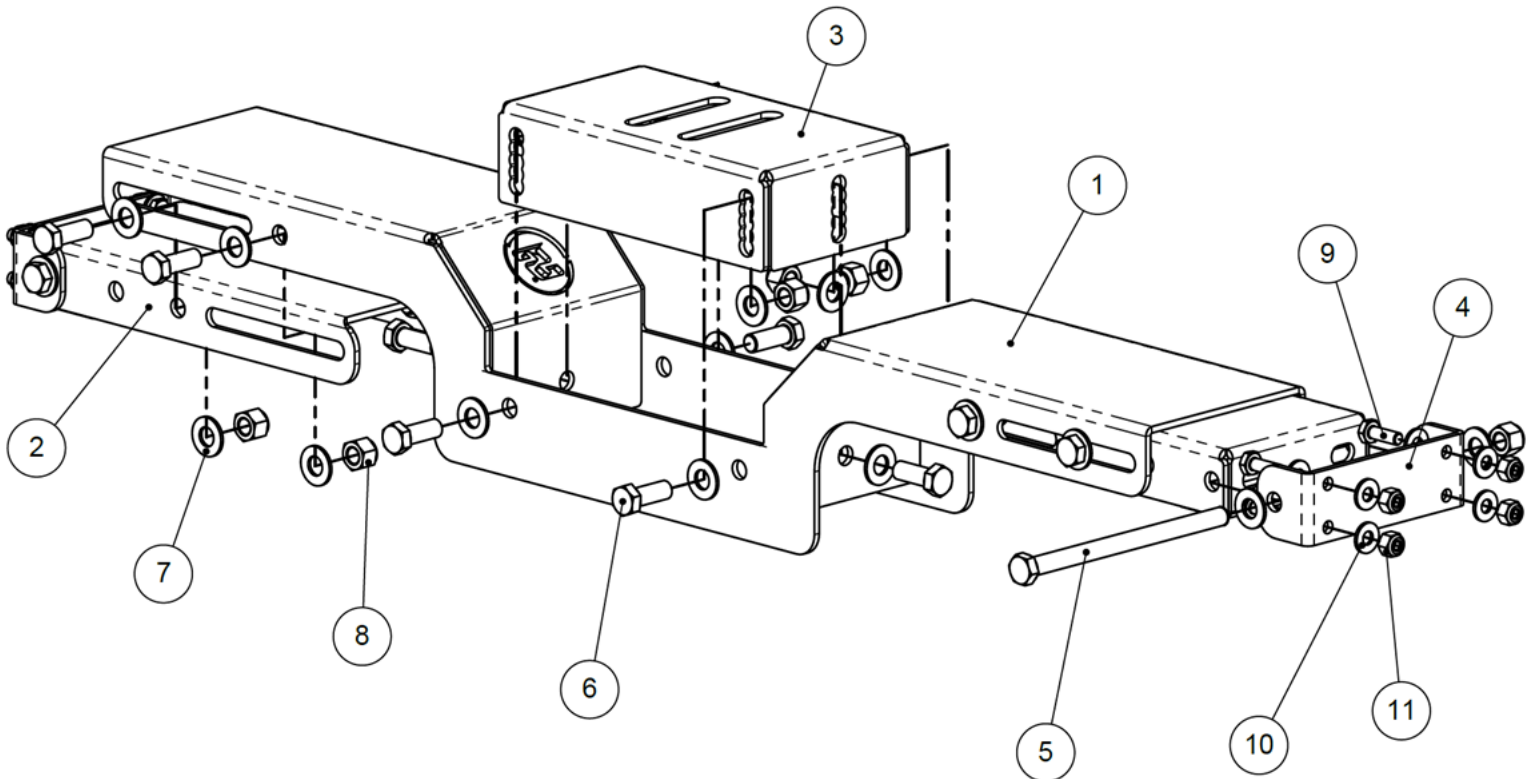


## 910-98007 - TorqLink™ Universal Adjustable Transmission Crossmember

Kit Contents			
Qty	Part #	Description	Item #
2	91098007.C#	Center Support	1
1	91098007.E#	End Slider	2
1	91098007.1	Center Mount	3
1	91098007.2	End Mount	4

Hardware			
Qty	Description	Tool Size	Item #
2	Hex Cap Screw, 3/8-24 x 5.50	9/16 Hex	5
22	Hex Cap Screw, 3/8-24 x 1.00	9/16 Hex	6
48	Flat Washer, 3/8	N/A	7
24	Nylon Lock Nut, 3/8-24	9/16 Hex	8
8	Hex Cap Screw, 1/4-28 x 0.75	7/16 Hex	9
16	Flat Washer, 1/4	N/A	10
8	Nylon Lock Nut, 1/4-28	7/16 Hex	11



# INSTRUCTIONS

© 2025, Speedway Motors, Inc.



1. First, measure your frame and verify you purchased the correct crossmember for your application. Each universal crossmember is adjustable but has a fixed width range which is shown in the table below. Be sure to check that your width is within the range for your specific mounting configuration because the length varies depending on if you are using the quick disconnect style or direct bolt on style mounting.

	Length w/ 2-Bolt Detach		Length w/o 2-Bolt Detach		X-Member Drop	
	Min	Max	Min	Max	Min	Max
91098007-NAR-2	32.4	37.6	29.5	36.5	1.5	2.5
91098007-NAR-4	33.9	39.1	31	38	3.5	4.5
91098007-WIDE-2	36.6	43.6	35.5	42.5	1.5	2.5
91098007-WIDE-4	38.1	45.1	37	44	3.5	4.5

2. After the engine and transmission are installed, support the transmission at the correct angle.

## Setting the Transmission Angle -

### Level the Vehicle:

Ensure the vehicle is on a flat, stable surface and supported evenly on all sides.

### Measure Transmission Angle:

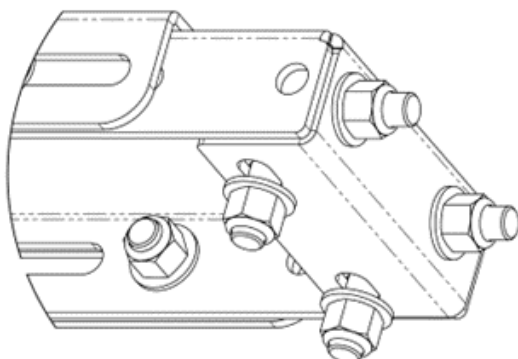
Use an angle finder on a flat surface of the transmission, such as the pan rail or output shaft housing. The angle should typically be 2-4° down toward the rear.

### Check Driveshaft and Pinion Angles:

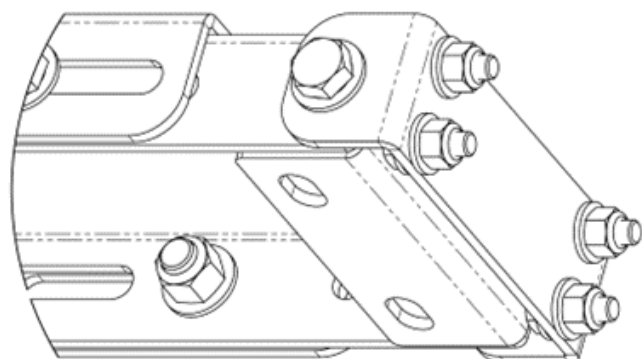
Measure the driveshaft and pinion angles to ensure proper alignment with the transmission. They should be within 1-3° of each other.

### Adjust the Transmission:

Raise or lower the transmission by adjusting the height adjuster to achieve the correct angle. You may need to add spacers or shims to the mount depending on your specific application.



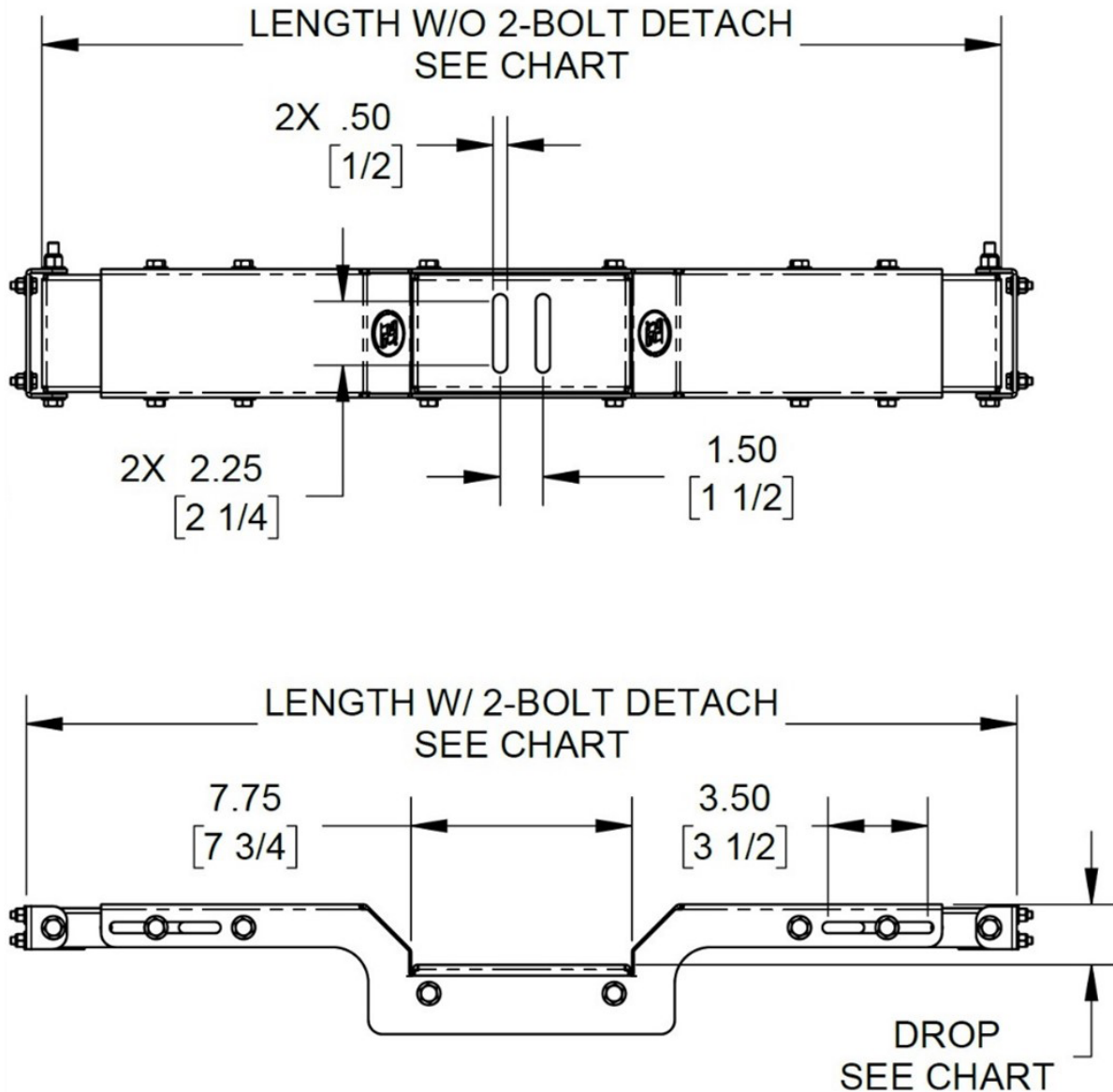
Direct Bolt-On Style



2-Bolt Disconnect Style

# INSTRUCTIONS

© 2025, Speedway Motors, Inc.



3. Count and ensure that all listed parts and hardware are supplied.

4. Mock up your crossmember with all bolts loose to allow the sliders to move. With your crossmember mocked into position, use the crossmember ends as a stencil to mark your holes for drilling. Be sure your crossmember is properly centered and square to the vehicle before marking your holes. The quick disconnect ends will require 1/4" holes and the direct bolt on style mounting will require 3/8" holes.

5. Drill your holes and install your crossmember. **NOTE:** It is recommended to drill pilot holes before drilling to the final size and re-mocking the crossmember to ensure that it is properly positioned.

6. With your crossmember installed, measure your side to side and verify that the crossmember is centered before tightening all bolts. At this time you can also adjust your vertical center slider as necessary.

# INSTRUCTIONS

© 2025, Speedway Motors, Inc.



## **Reverify the Transmission Angle:**

After installation, it's important to recheck the transmission angle after a few hundred miles of driving. Components can settle over time, which may cause the angle to shift slightly. Adjust as needed to maintain proper alignment.

### **Need Help with This Product?**

Talk to one of our Tech Support Agents:

Mon-Fri, 8am – 5pm (CST)

**U.S.:** 800.979.0122

**Canada:** 855.313.9180

**International:** 1.402.323.3200