

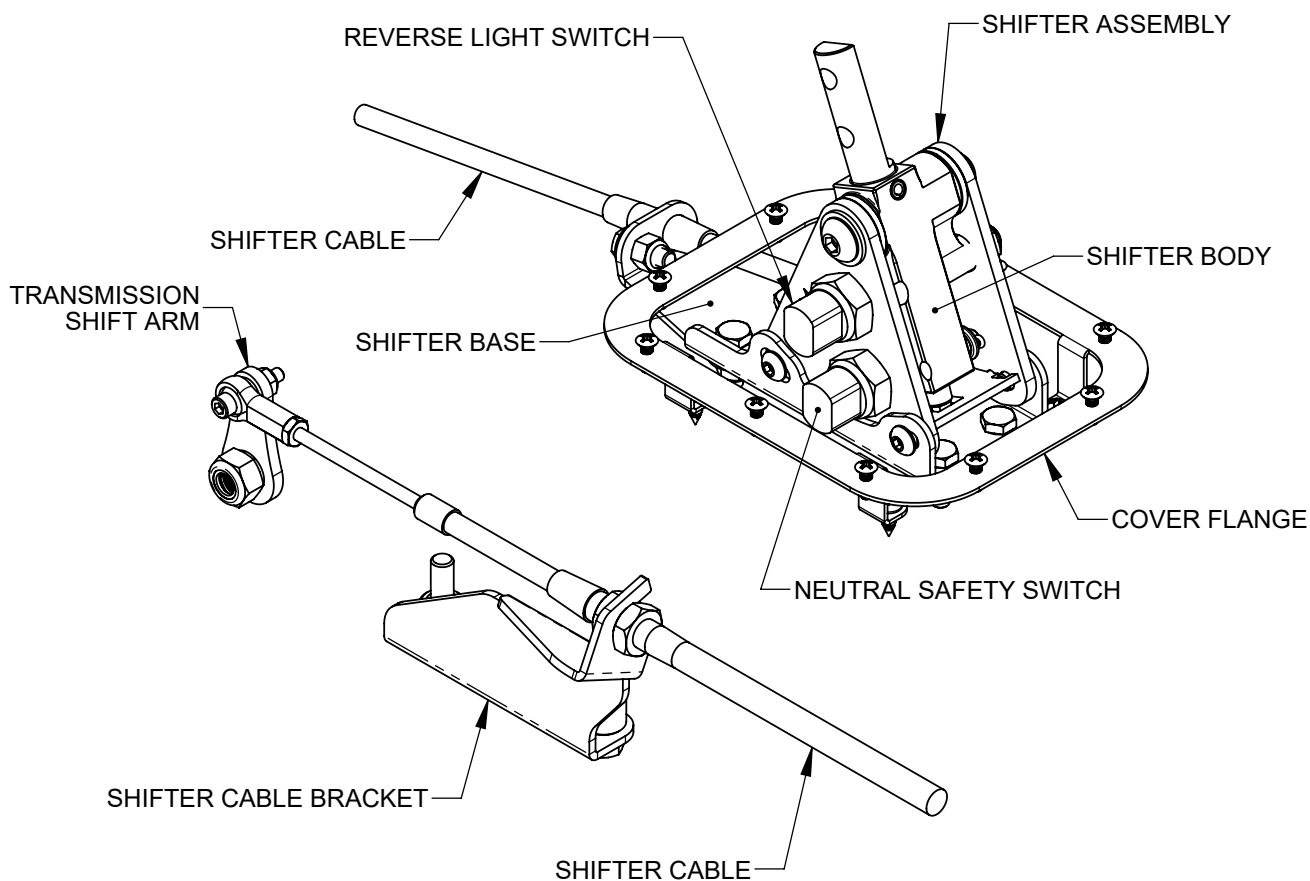
INSTRUCTIONS

© 2025, Speedway Motors, Inc.

SPEEDWAY
motors®

916-5014 - Side Detent Cable Floor Shifter for GM 700R4/2004R Transmission

Kit Contents		
	Part #	Description
1	916-5014.1	Assembly, Automatic Shifter
2	916-5000.2	Cable, Automatic Shifter
3	916-5014.3	Hardware, Automatic Shifter
4	916-5014.4	Bracket, Transmission Cable
5	916-5000.5	Flange, Cover
6	916-5000.6	Cover, Shifter



The shifter is designed to mount directly to the top of the floor. Determine the desired location and make sure there is no interference with the handle when the shift lever is in Park or in the low gear position, or any under car obstructions like brake or fuel lines. Mark the center of the front holes of the shifter base. Remove the (4) 1/4"-28 x 3/8" button head cap screws that attach the shifter assembly to the shifter base. Mark the center of the rear holes using the shifter base as a template. Drill through the floor at the (4) marked center points using a 5/16" drill bit.

INSTRUCTIONS

© 2025, Speedway Motors, Inc.

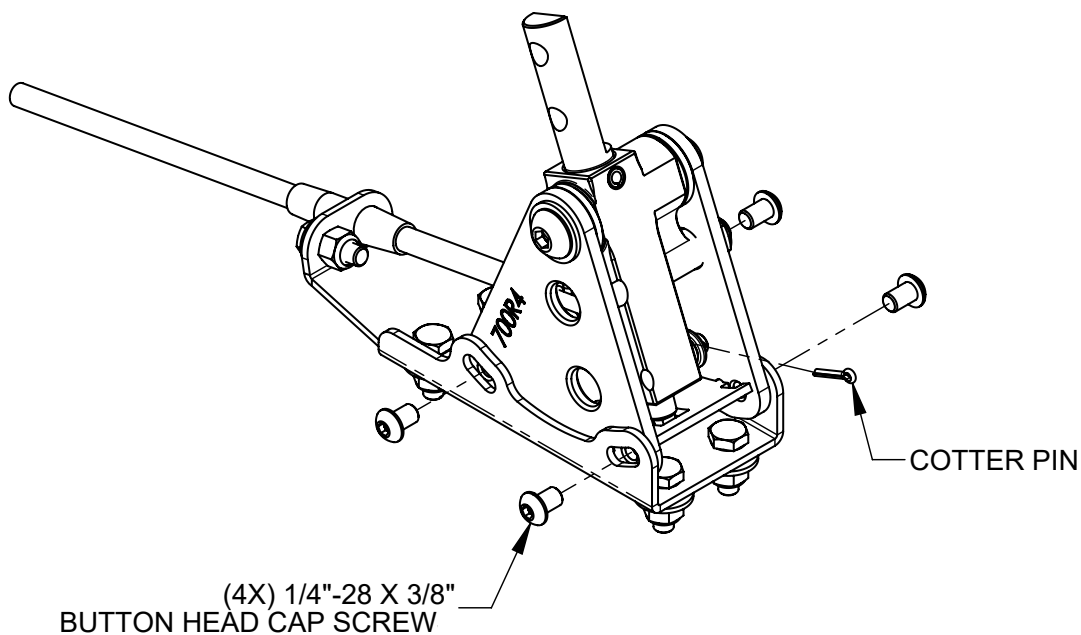
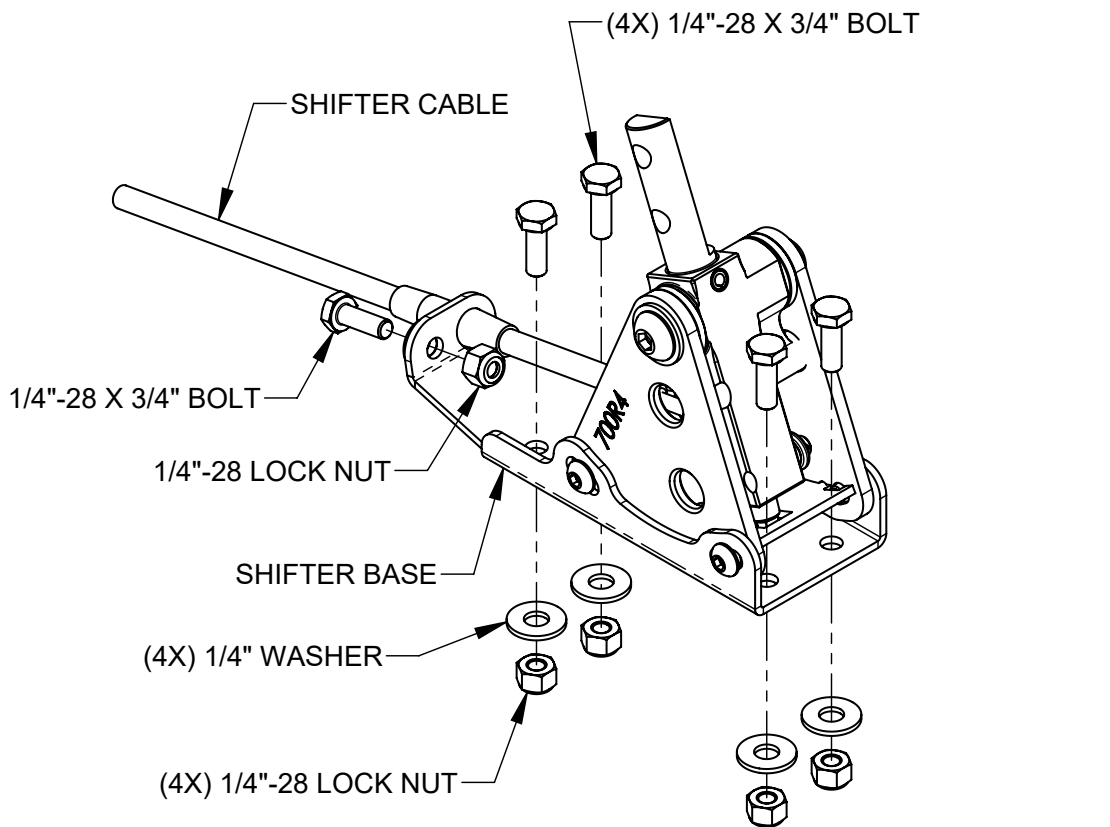


- 1.** Bolt the cable clip to the shifter base using the supplied 1/4"-28 x 3/4" bolt and lock nut. Next, determine where the cable will penetrate the floor. Cut an opening large enough for the threaded end of the cable to pass through the floor, again confirming that the underside is clear of any obstructions. Push the threaded end of the shift cable through the floor.
- 2.** Attach the shifter base to the floor using the supplied 1/4"-28 x 3/4 bolts, washers and lock nuts. Slide the eyelet end of the cable over the pin on the shifter body. Secure it using the supplied cotter pin. Reattach the shifter assembly to the shifter base using the (4) 1/4"-28 x 3/8" button head cap screws previously removed. Install the transmission shift arm onto the transmission selector shaft with the top of the slot facing the front of the vehicle. Attach with the provided washer and 3/8"-16 thin nyloc nut.
- 3.** To mount the transmission cable bracket, remove the middle two bolts on the transmission oil pan. Some transmissions may also have the two side mounting holes that can be used instead of mounting it to the bottom of the transmission pan. Install the cable bracket using the spacers and 8 mm x 1.25 x 35 mm bolts provided with the kit.
- 4.** Without kinking or binding the cable, route the cable through the trans tunnel to the cable bracket. Confirm that the cable is not too close to or in contact with the exhaust. Install the rod end and jam nut onto the threaded end of the shift cable. Rotate the transmission selector shaft to the Park position detent. Move the shift lever into the Park position. Place the cable in the bracket and adjust the jam nuts on the cable bulkhead until the rod end lines up directly with the hole of the transmission shift arm. Tighten the bulkhead jam nuts once the cable is aligned properly. Install the washer between the arm and rod end acting as a spacer. Then fasten them together using #10-24 x 1" cap screw and lock nut.
- 5.** This shifter is designed with a neutral safety switch and a reverse light switch. Install the normally open ball switches into the shifter assembly. The switch located on the bottom of the shifter is the neutral safety switch. Attach the start signal wire from the ignition switch to one terminal. Connect a wire from the other terminal to the positive side of the starter motor relay. Be sure the vehicle will only start in the Park or Neutral position.
- 6.** The top switch is for the reverse lights. Attach a 12V ignition switched wire from the fuse box to one terminal. Connect a wire from the other terminal to the reverse light wiring harness.
- 7.** Lastly install the cover flange. From left to right, the flange should be centered with the shift lever. From front to back, the inside of the flange should be in line with the back of the shifter base. Bend and modify the legs as necessary to match your vehicle's floor. Then attach the flange to the floor with the (4) supplied sheet metal screws.
- 8.** Depending on the length of your shift lever, you may want to adjust your side detent pressure. To adjust the pressure, loosen the nut of the tube coming through the side of the shifter assembly. Screw the setscrew further in for more pressure and back it out for less pressure. Then tighten the nut back up against the tube. Be careful not to screw the setscrew in too deep, which would make the side detent nonfunctional.
- 9.** Trim the cover to the contour of the tunnel. The cover can be installed either under or over the carpet. Lastly, install the cover and shifter boot.

INSTRUCTIONS

© 2025, Speedway Motors, Inc.

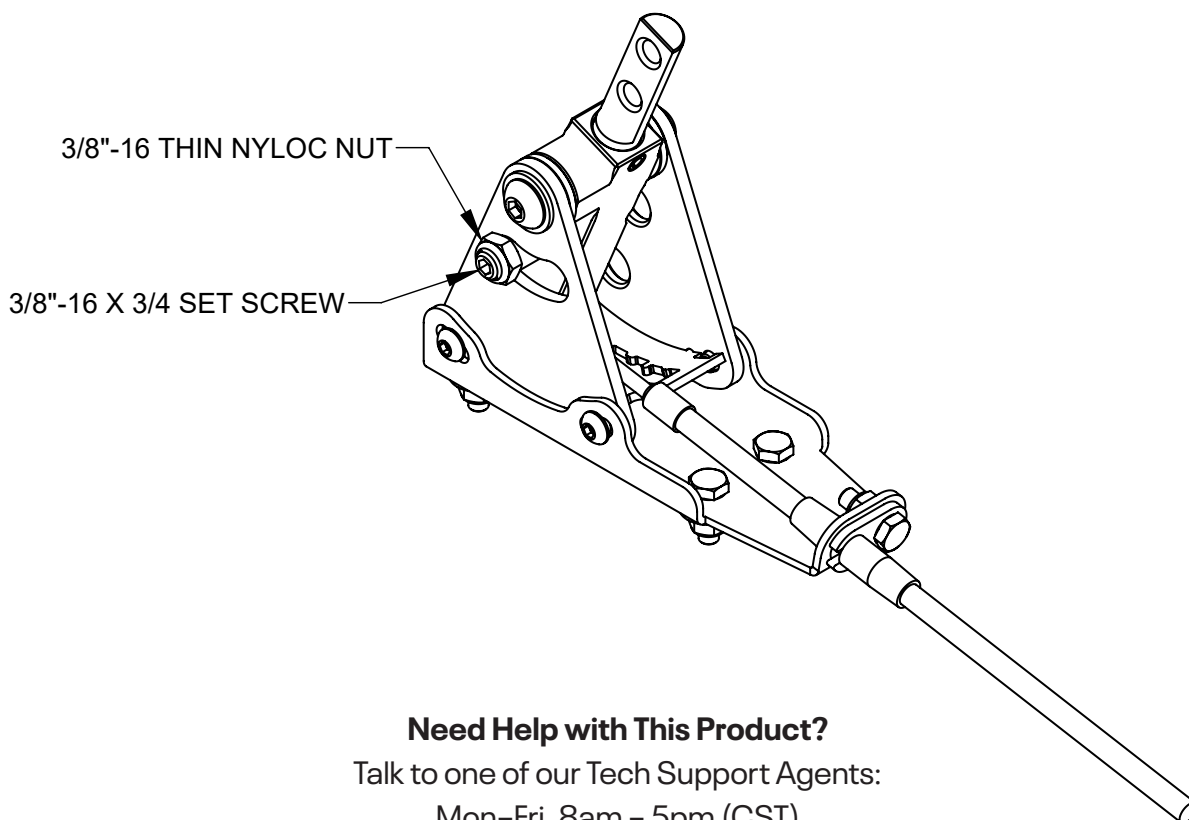
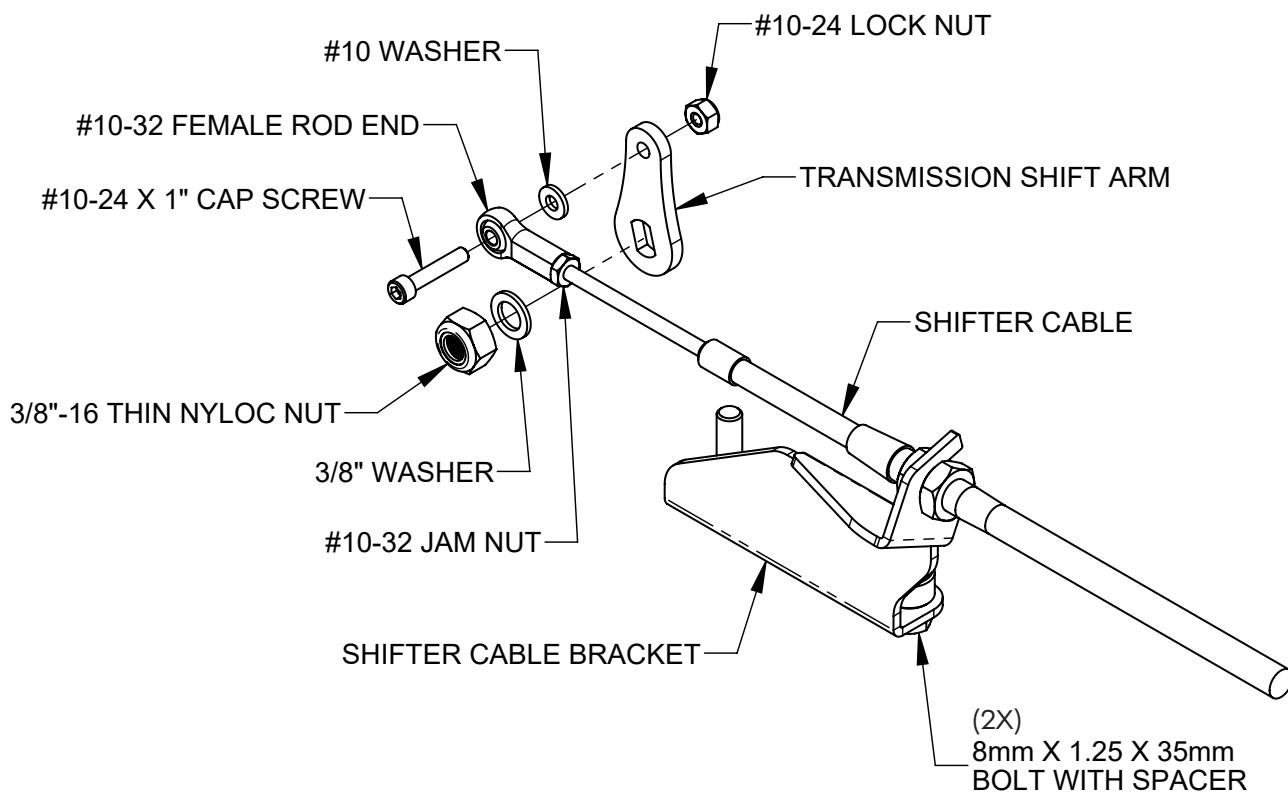
SPEEDWAY
motors®



INSTRUCTIONS

© 2025, Speedway Motors, Inc.

SPEEDWAY
motors®



Need Help with This Product?

Talk to one of our Tech Support Agents:

Mon-Fri, 8am - 5pm (CST)

U.S.: 800.979.0122

Canada: 855.313.9180

International: 1.402.323.3200